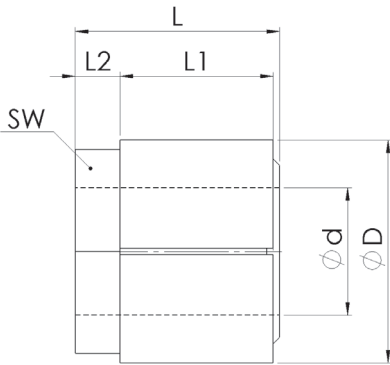


WSR512 selbstzentrierend self-centering



Material:
Stahl
Toleranz:
Welle: h8
Nabe: H8

Material:
Steel
Tolerance:
Shaft: h8
Hub: H8

| WSR512 | | Abmessungen Dimensions | | | | Technische Daten Technical Data | | | |
|--------|------|---------------------------|----|----|----|------------------------------------|----------------------|------|------|
| ØdxØD | TKN | L | L1 | L2 | SW | F _{ax} | P _N | TA | M |
| | [Nm] | [mm] | | | | [kN] | [N/mm ²] | [Nm] | [kg] |
| 17x32 | 211 | 30 | 22 | 6 | 30 | 25 | 92 | 110 | 0,12 |
| 18x32 | 233 | 30 | 22 | 6 | 30 | 25 | 92 | 110 | 0,11 |
| 19x32 | 236 | 30 | 22 | 6 | 30 | 25 | 92 | 110 | 0,11 |
| 20x35 | 303 | 33 | 24 | 7 | 32 | 30 | 94 | 150 | 0,14 |
| 22x35 | 333 | 33 | 24 | 7 | 32 | 30 | 94 | 150 | 0,13 |
| 24x38 | 405 | 35 | 25 | 8 | 36 | 33 | 93 | 185 | 0,17 |
| 25x38 | 422 | 35 | 25 | 8 | 36 | 33 | 93 | 185 | 0,16 |
| 28x45 | 515 | 41 | 29 | 11 | 46 | 36 | 73 | 240 | 0,29 |
| 30x45 | 551 | 41 | 29 | 11 | 46 | 36 | 73 | 240 | 0,27 |
| 32x50 | 601 | 44 | 30 | 12 | 50 | 37 | 65 | 265 | 0,38 |
| 35x50 | 658 | 44 | 30 | 12 | 50 | 37 | 65 | 265 | 0,34 |

Laufend aktualisierte Daten finden Sie auf unserer Homepage. For continuously updated data please refer to our website.

Technische Daten

TKN - Drehmoment
F_{ax} - Zulässige Kräftebelastung axial
P_N - Flächenpressung Nabe
TA - Anzugs-Drehmoment
M - Masse

Technical Data

TKN - Torque
F_{ax} - Permissible force load axial
P_N - Surface pressure hub
TA - Installation torque
M - Mass

| | | | | |
|---------------------------------|--------|----|---|----|
| Bestellbeispiel / order example | WSR512 | 24 | x | 38 |
| Modell / model | | | | |
| Ød | | | | |
| ØD | | | | |

